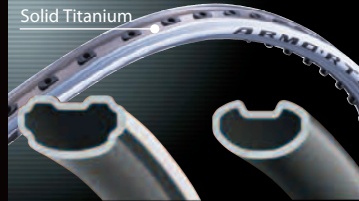


BADMINTON TECHNOLOGY



ARMORTEC

Solid Titanium



Power Armor System

The Power Armor System integrates the principles of gravitational acceleration and the high-repulsion properties of Titanium to launch players to the next level of power and speed. The edge of the frame top is reduced to minimize distortion and maximize control.

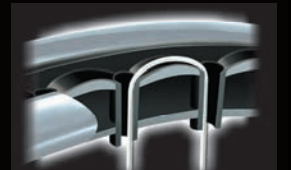


C.S. CAP

The Control Support Cap provides 88% wider flat surface compared with an ordinary racquet for easy gripping, fast swing-through and the quickest manoeuvrability.

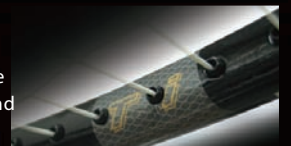
MUSCLEPOWER

Muscle Power seats the string on rounded archways that eliminate stress-load and fatigue through contact friction. The construction creates total unity of the string and frame through closer-and-tighter contact.



TITANIUM MESH

Ti Mesh racquets demonstrate excellent resistance to the high twisting forces generated at impact and have a mass ideally balanced for more face stability and head speed.



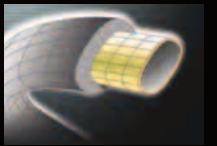
VIBRATION FILTER CAP

The cap is filled with formed Elastomer which absorbs unwanted vibration from the shaft giving enhanced comfort and feel.



LSC SYSTEM

The LSC (Low Shock for Comfort) system minimizes impact shock. Arm comfort is raised and shock impact is reduced to 15% less than a conventional racquet.



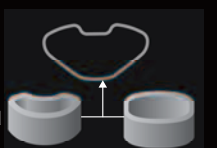
Ultimum™

Moulded into the racquet, it effectively stores energy on impact, then releases it in a quick-and-powerful snap-back action that transfers the fully energy of hits directly to the shuttlecock.



Delta Power Frame

YONEX applied the technologies of Aerodynamic Shape and Box Shape to the Delta Power Frame, which creates a stable and solid hitting face without sacrificing its power.



NEW GROMMET SYSTEM

This single-pass grommet hole construction provides more grommet holes, creating a high-performance stringing pattern that puts 7% more durability.



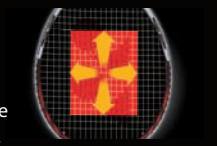
Built-in T-Joint

Moulded deep into the layers of graphite where the frame connects with the shaft, the YONEX built-in T-Joint creates a durable and high-strength one-piece frame that is torque-free.



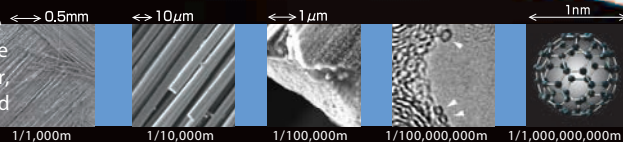
ISOMETRIC

The Isometric Square Head Shape equalizes the length of main and cross strings in the stringbed, enlarging the sweetspot for more consistent accuracy even on off-center hits.



NANOSCIENCE

YONEX Nanoscience achieves precise control over racquet functions at the molecular level. It establishes a high-performance molecular bond of the fullerene and carbon nano-particles, creating an ultra-lightweight racquet that's thinner, stronger and more stable than an ordinary racquet for maximum power and speed from swing energy.



NANOSCALE ELASTIC TI

Elastic Ti provides the high elasticity needed for structural high strength and a powerful rebound effect. At impact, Elastic Ti resists deformation, stretching then recovering its shape quickly to launch accurate hits charged with the full energy of the swing.



SPEC CHART

Series	NANOSPEED						
Model	9000X	9000S	8000	7700	7000	6000	5000
Colour	Glorious Gold	Glorious Gold	Yellow / Red	Gold / Shellwhite	Deep Red	Pearl White	Silver / Orange
Flex	Extra Stiff	Stiff	Extra Stiff	Medium	Stiff	Flexible	Medium
Construction - Frame	H.M. Graphite ELASTIC TITANIUM	H.M. Graphite ELASTIC TITANIUM	H.M. Graphite Fullerene	H.M. Graphite Fullerene Elastomer	H.M. Graphite Fullerene	Graphite Elastomer	Graphite
Construction - Shaft	H.M. Graphite Fullerene	H.M. Graphite Fullerene	H.M. Graphite Fullerene	H.M. Graphite Fullerene	H.M. Graphite Fullerene	H.M. Graphite Fullerene	H.M. Graphite Fullerene
Power / Control	5/5	5/5	5/5	5/5	5/5	5/5	4/5
Weight / Grip Size / Stringing Recommendation							
3U (85-89.9g)	G4,5 19-24 lbs (8.5-10.5 kg)	G4,5 19-24 lbs (8.5-10.5 kg)	G4,5 19-24 lbs (8.5-10.5 kg)	G4,5 19-24 lbs (8.5-10.5 kg)	G4,5 19-24 lbs (8.5-10.5 kg)	G3,4,5 17-22 lbs (7.5-9.5 kg)	G3,4,5 17-22 lbs (7.5-9.5 kg)
2U (90-94.9g)	G3,4,5 20-25 lbs (9.0-11.0 kg)	G3,4,5 20-25 lbs (9.0-11.0 kg)	G3,4,5 20-25 lbs (9.0-11.0 kg)	G3,4,5 20-25 lbs (9.0-11.0 kg)	G3,4,5 20-25 lbs (9.0-11.0 kg)		
U (95-99.9g)							
ELASTIC TI	●	●					
LSC SYSTEM				●		●	
Vibration Filter Cap				●			
Nanoscience	●	●	●	●	●	●	●
Control Support Cap							
Ultimum Ti							
Titanium Mesh							
ISOMETRIC	●	●	●	●	●	●	●
Built-in T-Joint	●	●	●	●	●	●	●
Shockless Grommet							
Frame Technology	Muscle Power Frame	Muscle Power Frame	Muscle Power Frame	Muscle Power Frame	Muscle Power Frame		

Series	ARMORTEC						
Model	900-P	900-T	700	500	300	250	150
Colour	Fire Red	Cool White	Clear Red	White / Gray	Yellow / Black	Green	Blue
Flex	Stiff	Stiff	Extra Stiff	Stiff	Medium	Stiff	Medium
Construction - Frame	Ultra H.M. Graphite Micro Ti ELASTIC TITANIUM	Ultra H.M. Graphite Micro Ti ELASTIC TITANIUM	Ultra H.M. Graphite gForce Ti	Graphite gForce Ti	Graphite Super Alloy	Graphite gForce Ti	Graphite Super Alloy
Construction - Shaft	H.M. Graphite ELASTIC TITANIUM	H.M. Graphite ELASTIC TITANIUM	H.M. Graphite UltimumTi	H.M. Graphite	H.M. Graphite	Graphite	Graphite
Power / Control	5/5	5/5	5/5	5/5	5/4	5/4	4/4
Weight / Grip Size / Stringing Recommendation							
4U (80-84.9g)	G4 19-24 lbs (8.5-10.5 kg)	G4 19-24 lbs (8.5-10.5 kg)	G4 19-24 lbs (8.5-10.5 kg)	G4 19-24 lbs (8.5-10.5 kg)	G4 19-24 lbs (8.5-10.5 kg)		
3U (85-89.9g)	G3,4,5 20-25 lbs (9.0-11.0 kg)	G3,4,5 20-25 lbs (9.0-11.0 kg)	G3,4,5 20-25 lbs (9.0-11.0 kg)	G3,4,5 20-25 lbs (9.0-11.0 kg)	G3,4,5 20-25 lbs (9.0-11.0 kg)	G3,4,5 20-25 lbs (9.0-11.0 kg)	G3,4,5 20-25 lbs (9.0-11.0 kg)
U (95-99.9g)							
ELASTIC TI	●	●					
LSC SYSTEM							
Vibration Filter Cap							
Nanoscience	●	●					
Control Support Cap	●	●	●	●	●		
Ultimum Ti			●				
Titanium Mesh							
ISOMETRIC	●	●	●	●	●	●	●
Built-in T-Joint	●	●	●	●	●	●	●
Shockless Grommet							
Frame Technology	Power Armor System	Power Armor System	Power Armor System	Power Armor System	Power Armor System	Power Armor System / Delta Power Frame	Power Armor System / Delta Power Frame

Series	MUSCLE POWER				
Model	99	45	29LT	21	18
Colour	Yellow	White / Venus Blue	Black / Red	Silver / Turquoise	Gold
Flex	Extra Stiff	Medium	Medium	Flexible	Flexible
Construction - Frame	Ultra H.M. Graphite UltimumTi	Graphite	Graphite	Graphite	Graphite
Construction - Shaft	H.M. Graphite UltimumTi	Graphite	Graphite	Graphite	Graphite
Power / Control	5/5	4/4	3/4	3/3	3/3
Weight / Grip Size / Stringing Recommendation					
3U (85-89.9g)	G4,5 17-22 lbs (7.5-9.5 kg)	G3,4,5 17-22 lbs (7.5-9.5 kg)	G3,4,5 17-22 lbs (7.5-9.5 kg)	G3,4,5 17-22 lbs (7.5-9.5 kg)	G3,4,5 17-22 lbs (7.5-9.5 kg)
2U (90-94.9g)	G3,4,5 18-23 lbs (8.0-10.0 kg)				
U (95-99.9g)					
ELASTIC TI					
LSC SYSTEM					
Vibration Filter Cap					
Nanoscience					
Control Support Cap					
Ultimum Ti	●				
Titanium Mesh			●		
ISOMETRIC	●	●	●	●	●
Built-in T-Joint	●	●	●	●	●
Shockless Grommet					
Frame Technology	Muscle Power Frame	Muscle Power Frame	Muscle Power Frame	Muscle Power Frame	Muscle Power Frame

Series	ISOMETRIC						
Model	75MFLT	65LT	30DF	25DF	23VF	20VF	20Jr
Colour	Silver	Wine	Black / Silver	Blue / Silver	Blue	Orange Blue	Glorious Gold
Flex	Extra Flexible	Medium	Medium	Stiff	Medium	Stiff	Stiff
Construction - Frame	Graphite	Graphite	Aluminium	Aluminium	Aluminium	Aluminium	Aluminium
Construction - Shaft	Graphite	Graphite	Graphite	Steel	Graphite	Steel	Steel
Power / Control	3/4	3/3	2/3	2/2	2/2	1/2	
Weight / Grip Size / Stringing Recommendation							
3U (85-89.9g)	G3,4,5 15-20 lbs (6.5-9.0 kg)	G3,4,5 15-20 lbs (6.5-9.0 kg)					
2U (90-94.9g)			G4		G4		G5 (21 Inches)
U (95-99.9g)				G4		G4	
ELASTIC TI							
LSC SYSTEM							
Vibration Filter Cap							
Nanoscience							
Control Support Cap							
Ultimum Ti							
Titanium Mesh							
ISOMETRIC	●	●	●	●	●	●	●
Built-in T-Joint	●	●	●				
Shockless Grommet							
Frame Technology	Mega-Frame		DURA-Frame	DURA-Frame	Vari-Frame	Vari-Frame	

Series	CARBONEX							
Model	30MS	21	20	8600TI	8000LT	7000DF	6000DF	8
Colour	Black / Silver	Red	Neon Orange	Black / Gold	Black / Warm Red	Navy Blue / Silver	Yellow / Black	Red / Black Yellow / Black
Flex	Stiff	Stiff	Stiff	Medium	Extra Flexible	Medium	Stiff	Medium
Construction - Frame	H.M. Graphite UltimumTi	H.M. Graphite	Graphite	Graphite	Graphite	Aluminium	Aluminium	Aluminium
Construction - Shaft	H.M. Graphite UltimumTi	H.M. Graphite	Graphite	Graphite	Graphite	Graphite	Steel	Graphite
Power / Control	5/5	5/5	4/5	4/3	3/3	2/3	2/2	3/3
Weight / Grip Size / Stringing Recommendation								
3U (85-89.9g)	G4,5 17-22 lbs (7.5-9.5 kg)		G4,5 16-21 lbs (7.0-9.0 kg)	G3,4,5 15-20 lbs (6.5-9.0 kg)	G3,4,5 15-20 lbs (6.5-9.0 kg)			G3,4,5
2U (90-94.9g)	G3,4,5 18-23 lbs (8.0-10.0 kg)	G3,4,5 17-22 lbs (7.5-9.5 kg)	G3,4,5 17-22 lbs (7.5-9.5 kg)			G3,4,5		
U (95-99.9g)							G4	
ELASTIC TI								
LSC SYSTEM								
Vibration Filter Cap								
Nanoscience								
Control Support Cap								
Ultimum Ti	●							
Titanium Mesh				●				
ISOMETRIC								
Built-in T-Joint	●	●	●	●	●	●		
Shockless Grommet								
Frame Technology	Muscle Power Frame					DURA-Frame	DURA-Frame	

