

# SHOES



## POWER CUSHION



The YONEX Power Cushion effectively absorbs shock then reverses the impact energy for smooth transfer into the next movement. Compared with urethane, the YONEX Power cushion construction provides 3 times more shock absorbing power.

## ROUND SOLE



The YONEX Round Sole is designed to provide all-around support for quick and smooth footwork. The Round Sole integrated into the forefoot and heel of the shoe minimize power loss, ensuring smooth movements the transfer of maximum energy into successive movements.

### Hexagrip

Created for agile and stable footwork, the Hexagrip pattern is made from a newly-developed material that provides 3% more gripping power and is 20% lighter than an ordinary material.



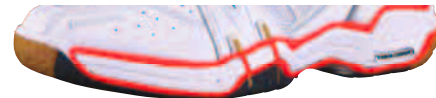
### Lateral Claw

The Lateral Claw construction stabilizes the sides of the feet to prevent lateral movement upon landing. This transfers more power into the next step.



### Super msLite

This high-performance construction features a polymer-base Midsole 10% lighter than msLite. In addition to this, the Super msLite is 20% more durable than ordinary E.V.A., so the original comfort and shape are retained for long-lasting value.



### Power Graphite Light

By combining Power Graphite with E.V.A., YONEX creates a lightweight shoe providing high stability.

### Double Russel Mesh

Super light-weight and durable, this ultra-fine mesh provides 8 times more air-exchange performance than ordinary mesh for maximum moisture release.

### msLite

Stronger and lighter than E.V.A. shoes, msLite shoes fully support quick footwork. msLite maintains the original shape of the shoes longer for extended cushioning performance.

### Power Cushion Insole MC & FG

Power Cushion Insole gives the feet more support inside the shoe so that lateral movement will not diminish power.

### Ergoshape

Scientifically contoured, the Ergoshape provides more comfort and stability in the forefoot and toe area of the shoe.

### Tough Guard III

3 times stronger than ordinary synthetic leather. In addition to high strength, it has excellent resistance to heat for added long-wearing performance.

## SHB-100 Limited

NEW

Upper: Florissimo, Double Russel Mesh, Kuraster  
Midsole: Super msLite, Power Cushion, T.P.U., Solid E.V.A.  
Outsole: Rubber  
Colour: Gold



SHB-100 Limited Gold

## SHB-100 M

NEW

Upper: P.U. Leather, Double Russel Mesh, Tough Guard II  
Midsole: Super msLite, Power Cushion, T.P.U., Solid E.V.A.  
Outsole: Rubber  
Colour: Metallic Red



SHB-100 M Metallic Red

## SHB-100 L

NEW

Upper: P.U. Leather, Double Russel Mesh, Tough Guard II  
Midsole: Super msLite, Power Cushion, T.P.U., Solid E.V.A.  
Outsole: Rubber  
Colour: Aqua Blue



Made in China

- Power Cushion
- Super msLite
- Round Sole
- Hexagrip Sole
- Power Cushion Insole MC
- Ergoshape
- Double Russel Mesh
- Lateral Claw

## SHB-90 M

Upper: P.U. Leather, Double Russel Mesh, Tough Guard III  
Midsole: msLite, Power Cushion, Solid E.V.A., Graphite Sheet  
Outsole: Rubber  
Colour: Clear Blue

- Power Cushion
- msLite
- Round Sole
- Power Cushion Insole FG
- Power Graphite Lite
- Ergoshape
- Double Russel Mesh



Made in China

## SHB-90 L

Upper: P.U. Leather, Double Russel Mesh, Tough Guard III  
Midsole: msLite, Power Cushion, Solid E.V.A., Graphite Sheet  
Outsole: Rubber  
Colour: Clear Red

- Power Cushion
- msLite
- Round Sole
- Power Cushion Insole FG
- Power Graphite Lite
- Ergoshape
- Double Russel Mesh



Made in China

## SHB-71

NEW

Upper: P.U. Leather, Polyester Mesh  
Midsole: msLite, Power Cushion  
Outsole: Rubber  
Colour: White / Red, White / Blue

- Power Cushion
- msLite
- Ergoshape

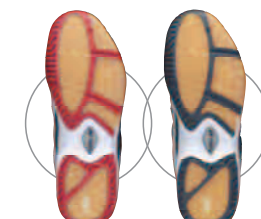


Made in China

## SHB-56

Upper: P.U. Leather, Polyester Mesh  
Midsole: E.V.A.  
Outsole: Rubber  
Colour: White / Red, White / Sax

- Power Cushion
- Ergoshape



Made in China

## SHB-41

NEW

Upper: P.U. Leather, Polyester Mesh  
Midsole: E.V.A.  
Outsole: Rubber  
Colour: Navy Blue

- Power Cushion
- Ergoshape



Made in China



# CLOTHING



## VERY COOL

**LOWERS BODY TEMPERATURE 3° FOR COOLER PLAY**

Xylitol-impregnated Very Cool Sportswear absorbs the heat of perspiration. No matter what the ambient temperature, Very Cool Polo Shirts lower body heat 3 degrees for cooler play. Very Cool Polo Shirts also filter ultraviolet and infrared radiation, intercepting ultraviolet radiation and infrared radiation to minimize heat build-up in the shirt during play.

**-3°C**

\*Data from Unitika Garments Technology & Research Laboratories Ltd.



Pale Yellow



**10011** **NEW**  
Material: Body part Polyester 100%  
Insertion Polyester 84%  
Polyurethane 16%  
Made in China

Black

**15002** **NEW**  
Material: Polyester 92%  
Polyurethane 8%  
Made in China



White



**10016** **NEW**  
Material: Polyester 100%  
Made in China

Charcoal

**15002** **NEW**  
Material: Polyester 92%  
Polyurethane 8%  
Made in China



Clear Red



**10011** **NEW**  
Material: Body part Polyester 100%  
Insertion Polyester 84%  
Polyurethane 16%  
Made in China

Black

**15002** **NEW**  
Material: Polyester 92%  
Polyurethane 8%  
Made in China



Navy Blue



**10014** **NEW**  
Material: Polyester 100%  
Made in China

Navy Blue

**15002** **NEW**  
Material: Polyester 92%  
Polyurethane 8%  
Made in China



Light Orange



**10023** **NEW**  
Material: Body part Polyester 100%  
Insertion Polyester 84%  
Polyurethane 16%  
Made in China

Black

**15002** **NEW**  
Material: Polyester 92%  
Polyurethane 8%  
Made in China

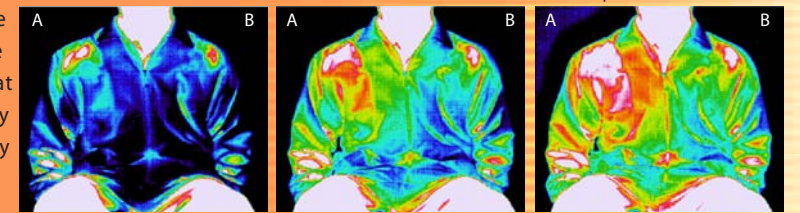


## HEAT CAPSULE

**RAISES BODY TEMPERATURE 3° FOR COMFORTING WARMTH**

Heat Capsule Sportswear uses advanced material and fabrication technology to generate 3 degrees of extra warmth. The Heat Capsule fabric absorbs the infrared radiation in sunlight and the tiny Hollow Capsules between the Heat-retention Test fibres and on the fabric surface store then convert into heat the infrared energy released by the body for more warmth.

**+3°C**



Start After 60 seconds After 120 seconds  
\*Data from Unitika Garments Technology & Research Laboratories Ltd.  
Heat Capsule needs only 60 seconds to show its outstanding thermal performance.

## TRACK SUITS



Charcoal



Light Gray



**55005** **NEW**  
Material: Polyester 100%  
Made in China

**65003** **NEW**  
Material: Polyester 100%  
Made in China

## CAP & VISOR



White

Navy Blue

**W-341**

Material: Polyester 100%  
Made in Taiwan



Black

White

Pink

**W-441**

Material: Polyester 100%  
Made in Taiwan

## WRIST BAND & HEAD BAND



**AC482EX**

Material: Polyester  
Colour: White, Navy Blue,  
Yellow, Black, Red  
Made in Taiwan

**AC209EX**

Material: Cotton/Acryl  
Colour: Navy Blue,  
White / Black  
Made in Taiwan

**AC256EX**

Material: Cotton/Acryl  
Colour: Navy Blue,  
White  
Made in Taiwan

**AC407EX**

Head Band  
Colour: White  
Made in China

## SOCKS



**W-571** **NEW**

Made in China

**W-572** **NEW**

Made in China

Socks Size (cm)	
S	22.0-25.0
M	25.0-28.0
L	28.0-31.0

### Unisex Size Chart

	Height	Chest	Waist
XS	162-168	84-92	70-78
S	167-173	88-96	74-82
M	172-178	92-100	78-86
L	177-183	96-104	82-90
XL	182-188	100-108	86-94
XXL	187-193	104-112	90-98

### Ladies Size Chart

	Height	Chest	Waist
XS	152-158	76-84	57-65
S	157-163	79-87	60-68
M	162-168	82-90	63-71
L	167-173	85-93	66-74
XL	172-178	88-96	69-77
XXL	177-183	91-99	72-80